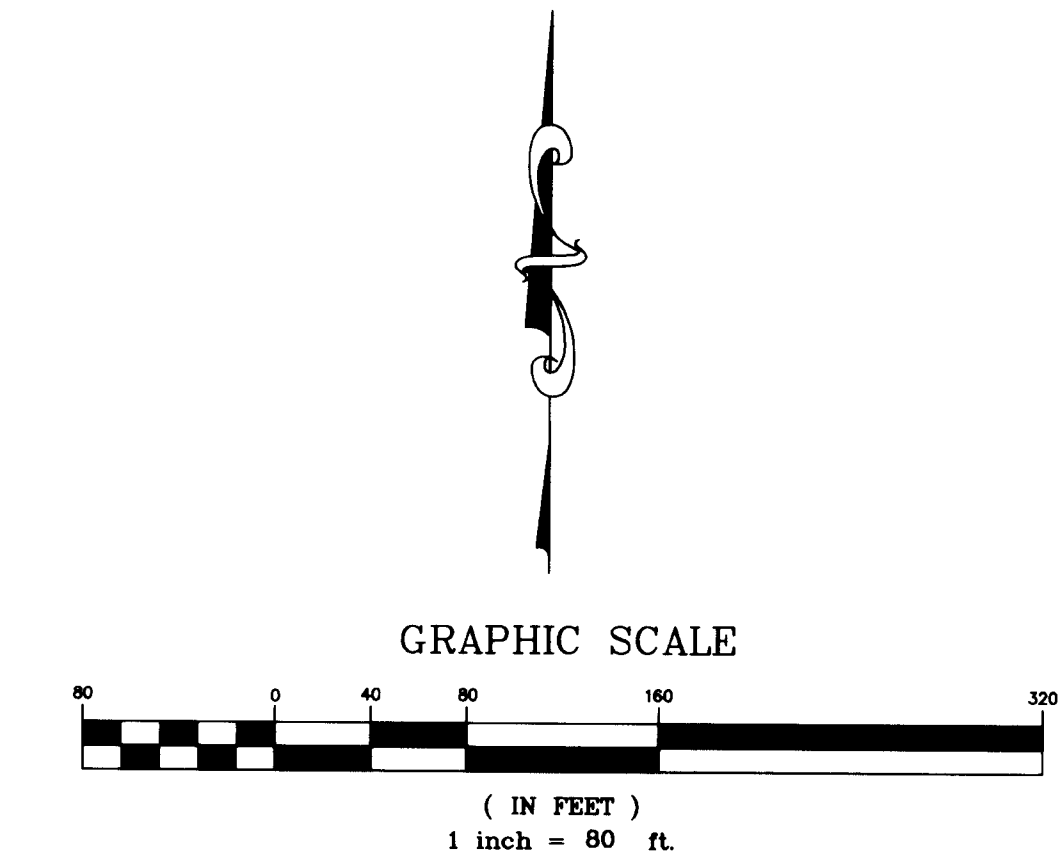
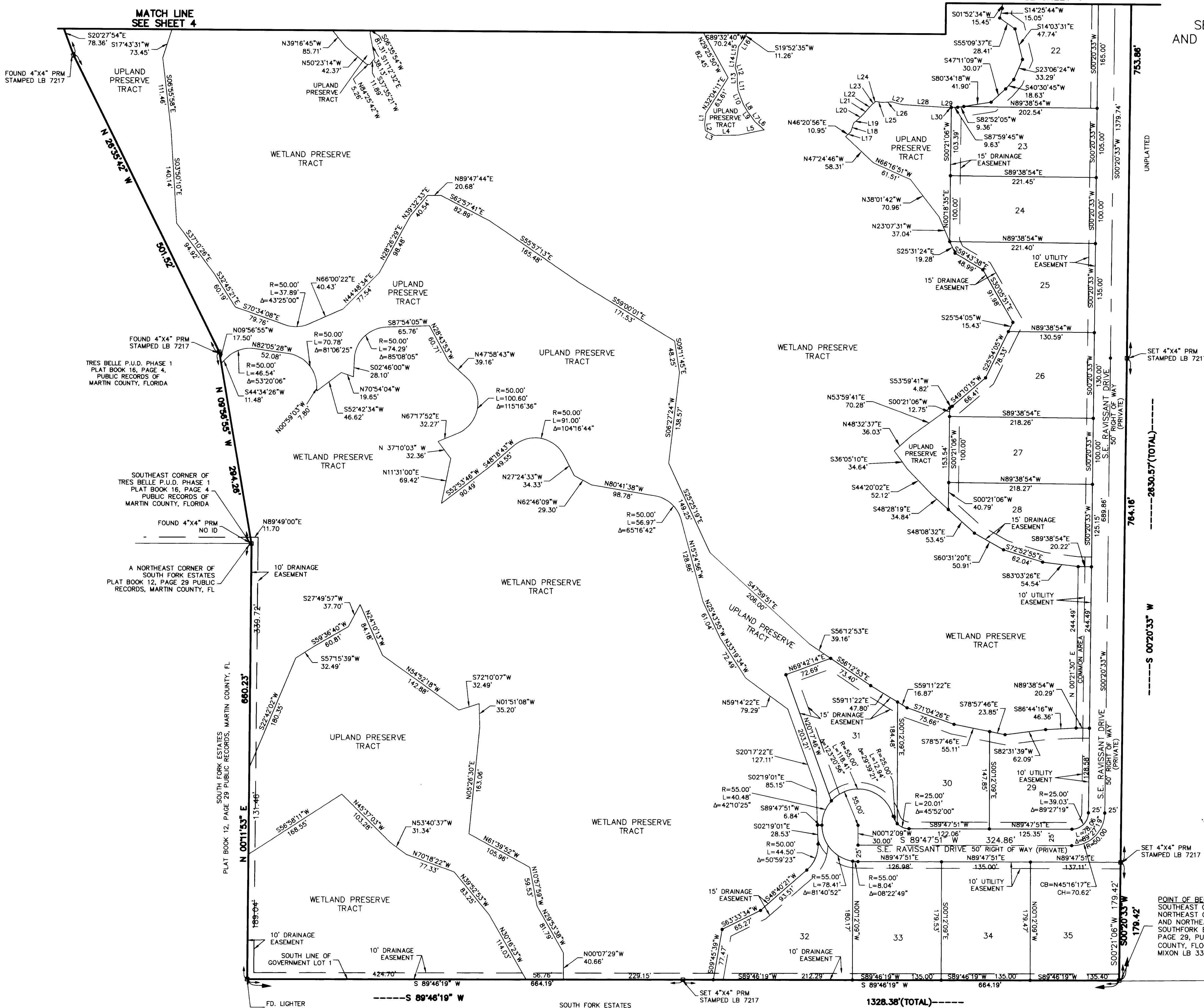


A PLAT OF
TRES BELLE P.U.D. PLAT NO. 2

BEING A PORTION OF LAND LYING IN
SECTION 4, TOWNSHIP 39 SOUTH, RANGE 41 EAST
AND SECTION 33, TOWNSHIP 38 SOUTH, RANGE 41 EAST,
MARTIN COUNTY, FLORIDA



GENERAL NOTES

A. BEARINGS AS SHOWN HEREON ARE BASED ON FLORIDA STATE PLANE COORDINATE SYSTEM, FLORIDA EAST ZONE, NAD 83.90 AND THE SOUTH LINE OF GOVERNMENT LOT 1, SECTION 4, TOWNSHIP 39 SOUTH, RANGE 41 EAST, HAVING A BEARING OF SOUTH 89°46'19" WEST.

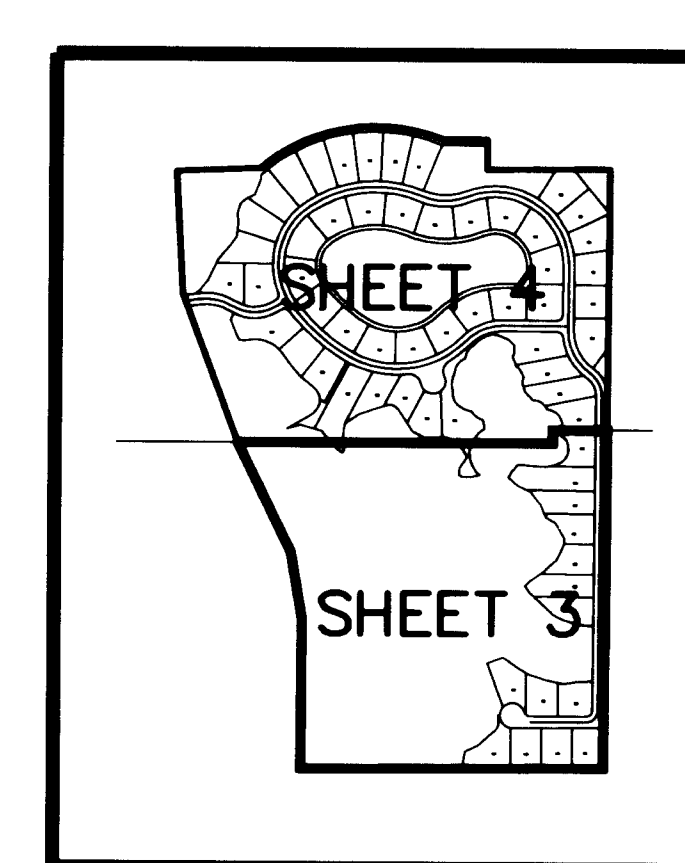
B. THIS PLAT, AS RECORDED IN ITS ORIGINAL FORM IN THE PUBLIC RECORDS, IS THE OFFICIAL DEPICTION OF THE SUBDIVIDED LANDS DESCRIBED HEREON AND WILL IN NO CIRCUMSTANCES BE SUPPLANTED IN AUTHORITY BY ANY OTHER FORM OF THE PLAT, WHETHER GRAPHIC OR DIGITAL.

C. THERE MAY BE ADDITIONAL RESTRICTIONS THAT ARE NOT RECORDED ON THIS PLAT THAT MAY BE FOUND IN THE PUBLIC RECORDS OF THIS COUNTY.

LINE TABLE			LINE TABLE		
LINE	LENGTH	BEARING	LINE	LENGTH	BEARING
L1	16.98	N06°24'26"E	L14	15.66	S09°42'43"W
L2	9.84	N06°51'47"W	L15	16.14	S08°17'02"W
L3	15.97	N63°13'37"W	L16	17.75	S34°53'37"W
L4	36.21	S89°46'14"W	L17	10.95	N46°20'36"E
L5	40.69	S78°28'33"W	L18	14.20	N17°25'11"E
L6	19.55	S49°25'48"E	L19	7.33	N51°41'00"E
L7	9.66	S34°39'31"E	L20	11.37	N46°25'31"E
L8	13.22	S31°41'39"E	L21	11.60	N40°31'23"E
L9	7.98	S37°55'41"E	L22	9.29	N41°52'29"E
L10	23.01	S21°3'29"E	L23	3.90	N52°47'15"E
L11	13.78	S05°25'19"E	L24	3.23	N44°52'40"E
L12	11.95	S16°39'01"E	L25	9.02	S80°25'36"E
L13	9.90	S00°11'04"W	L26	16.18	N86°52'29"E
			L27	15.35	S74°55'08"E
			L28	64.28	S86°43'05"E
			L29	8.59	S88°11'39"E
			L30	2.58	N87°59'45"E

LEGEND

- INDICATES SET 5/8" IRON ROD & CAP "LB 7217"
- ⊙ INDICATES NAIL & DISK "LB 7217" (PCP)
- INDICATES SET 4" x 4" CONCRETE MONUMENT WITH ALUMINUM DISK STAMPED "LB 7217" (PRM)
- P.U.D. PLANNED UNIT DEVELOPMENT
- PCP PERMANENT CONTROL POINT
- PRM PERMANENT REFERENCE MONUMENT
- LB LICENSED BUSINESS
- Δ DELTA ANGLE
- R RADIUS
- L LENGTH
- CB CHORD BEARING
- CH CHORD DISTANCE
- CM CONCRETE MONUMENT
- ID IDENTIFICATION
- P.L.S. PROFESSIONAL LAND SURVEYOR



PREPARED BY:
Gregory S. Fleming
Professional Surveyor & Mapper
Florida Registration No. 4350

NORTHSTAR GEOMATICS
P.O. BOX 2371 STUART, FL 34995
OFFICE (772) 781-6400 FAX (772) 781-6462
LICENSED BUSINESS NO. 7217

Scale
1"=80'
Sheet
3
of
4